

GACIRON®

**WARNINGS**

**ATTENTION:**

\*Please charge the product at the environmental temperature between 5°C and 40°C.  
 \*When charging, it is recommended to use a 5V USB power adapter.  
 \*After charging, please unplug the power connector.  
 \*Please do not charge, discharge or store the product in high temperature environment, otherwise it will accelerate the battery aging.  
 \*Please do not put the battery in car or near power sources.  
 \*After correct charging, if the battery life is getting shorter and shorter, it means that the rechargeable battery has reached its effective service life. Please replace the battery at the local maintenance point and properly dispose of the used rechargeable battery according to local regulations.

**STORAGE PRECAUTIONS:**

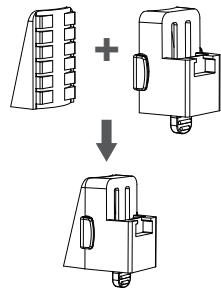
\*The product needs to be recharged every three months without being used, so as to avoid battery damage and unusable situations.  
 \*Please fully charge the lights and store them in a cool dry place.

**USING PRECAUTIONS:**

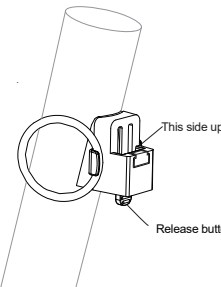
\*Please do not throw the product into fire.  
 \*Please do not soak the product in water.

**2. SEAT POST BRACKET MOUNTING**

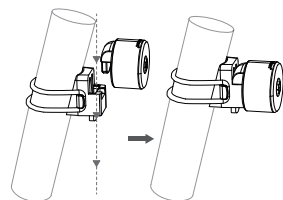
(1) Attach the anti-slip pad onto the magnetic bracket as the picture shown below.



(2) Tighten the magnetic bracket to the seatpost with the silicone strap.

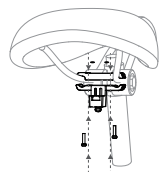


(3) Insert the light into the bracket as the picture shown below. The light will be locked into place by the magnetic force.



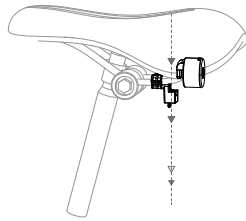
**3. SADDLE BRACKET MOUNTING**

(1) First install the saddle bracket on the saddle as shown below, place the nuts, align them with the screw holes, and then tighten them with hex wrench.



Note: If the saddle rail is made of carbon fiber material, please confirm with the supplier the maximum torque that the material can withstand. When tightening the screws, be careful not to exceed this torque to avoid bursting the saddle rail.

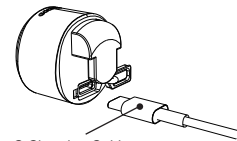
(2) Insert the light into the bracket as the picture shown below. The light will be locked into place by the magnetic force.



Note: Press the release button and pull it up to remove the taillight

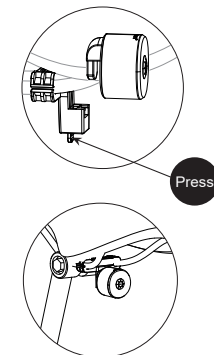
**4. CHARGING**

Uncover the USB-C waterproof silicone plug on the back of the light, then insert the Type-C cable to connect the charging device.  
**Charging:** The indicator light flashes in red color.  
**Fully Charged:** The indicator light is constant on in blue color.

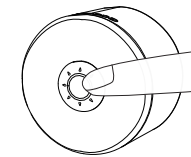


Note: Please ensure that the waterproof plug is fully closed in flat status so that the taillight can be installed properly and stays waterproof.

**5. OPERATION AND FUNCTION**



Note: Press the release button and pull it up to remove the taillight



(1) Long press the power button for 0.75 seconds to turn on/off the light; Short press to change the working modes: Power saving mode - Trail mode - Fog light mode - Low steady - Medium steady - High steady - cycle.

| Remaining Battery         | Indicator Color |
|---------------------------|-----------------|
| 100-61%                   | Blue            |
| 60-21%                    | Yellow          |
| 20-1%                     | Red Flash       |
| Charging Time: ≈2.5 hours |                 |

**Circuit Protection:** Circuit overcharge protection, overdischarge protection, short circuit protection.

**6. SPECIFICATION**

|                                     |                |
|-------------------------------------|----------------|
| Model                               | LOOP-100       |
| Light Source                        | COB            |
| Max Brightness                      | 100 lm         |
| Battery                             | 420mAh         |
| Input                               | Type-C 5V/0.2A |
| Visible Angle                       | >220°          |
| Visible Beam Distance               | >1000m         |
| Waterproof                          | IPX6           |
| Dimension                           | Φ33.5*30.2mm   |
| Net Weight (Not including brackets) | ≈25g           |

Shenzhen Gaciron Technology Co., Ltd

Headquarters: Rm101, Joinin Hub, Innovation Community, Honglang North, No. 49th, Dabao Rd, 28th District, Bao'an, Shenzhen, China

Customer Service Hotline: 86 755 23322700

Website: www.gaciron.com

Product Standard: Q/JXL 002-2022

Made in China



Warranty Certificate

User's Information (Filled in by User)

Name: \_\_\_\_\_ Phone: \_\_\_\_\_

Zip Code: \_\_\_\_\_

Address: \_\_\_\_\_

Purchase Date: \_\_\_\_\_ Year \_\_\_\_\_ Month \_\_\_\_\_ Day

The following are filled in by the consignee:

Sales Information: \_\_\_\_\_

Sales Company (Stamped with Company Seal) \_\_\_\_\_

Phone: \_\_\_\_\_

Address: \_\_\_\_\_

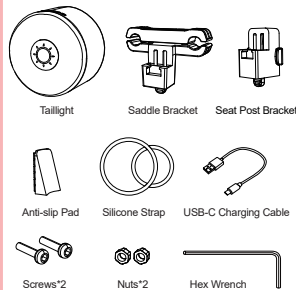
Nearby Service Guidance (Customer First Contact Point)

Service Unit: \_\_\_\_\_

Phone: \_\_\_\_\_

Address: \_\_\_\_\_

**1. PACKAGE LIST**



Warranty Card

1. Please contact the wholesaler for customer service. For inherent problems under correct use, we accept a return during seven days since purchase. Users are allowed to replace a new product of the same model during fifteen days since purchase, and package is excluded in the replacement.  
 2. Purchase date is defined in accordance with the invoice or receipt made by wholesaler.  
 3. Under the following circumstances, return and fix are both invalidated, but we offer a paid repair service  
 (1) All damages caused by subjective factors, such as using under abnormal conditions or against the user manual.  
 (2) User's independent repairing and modifying or other unauthorized maintenance  
 (3) Damages caused by improper shipping  
 4. We offer return/maintenance service by presenting this card, please show your invoice or receipt when the service is needed.  
 5. Gaciron is responsible for any damages caused by the following improper uses  
 (1) Hidden safety factors or incidents caused by user's improper operation or other accidents.  
 (2) Hidden safety factors or incidents caused by irresistible factors.  
 (3) Damages or accidents or injuries caused by user's independent operation against the manual or using other materials on the product which causes malfunction.  
 6. Wherever you purchase this product, you have the total access to equivalent services from the nearest customer service center. If the problem is not solved to your satisfaction, please make a phone call to us or email to our customer service department.  
 7. The right of modification and interpretation on the above terms is held.



| Working Mode                                   | Running Time |
|--|--------------|
| High Steady                                    | ≈5.5 hrs     |
| Medium Steady                                  | ≈12 hrs      |
| Low Steady                                     | ≈20 hrs      |
| Fog Light Mode (High Variable Frequency Flash) | ≈10 hrs      |
| Trail Mode (High Quick Flash)                  | ≈24 hrs      |
| Power Saving Mode (Low Slow Flash)             | ≈40 hrs      |
| Brake Mode                                     | /            |